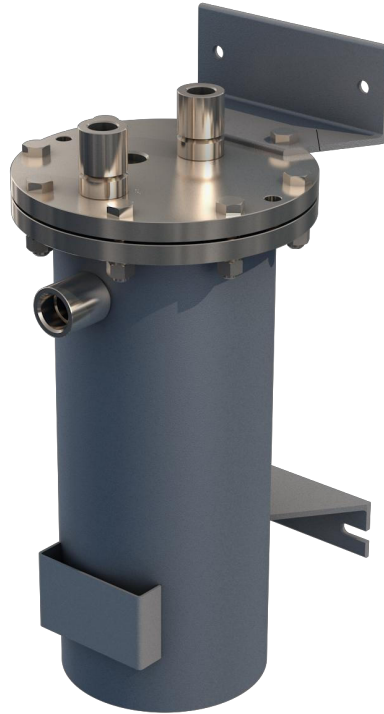


# AHR(L) SERIES

Heat exchanger



- Increase the saturated steam pressure margin of the Seal Chamber
- Provide appropriate pressure difference to achieve better flow speed
- Take away the friction heat of the sealing face
- Cartridge Unit

Shanghai Newworld Fluid Machinery Co.,Ltd

Web: [www.newworld-cn.com](http://www.newworld-cn.com)  
Email: [sales@newworld-cn.com](mailto:sales@newworld-cn.com)  
Tel.: +86 21 60255286

Factory Add.: No.11 Xinghuo Road, Qianzhou Supporting Area,  
Huishan District, Wuxi City, Jiangsu Province, China

International sales office:  
Tel: +86 21 60255286  
Add :Room 501 No 1198 Defu Road Jiading District Shanghai China

## AHR(L) SERIES

The heat exchanger is mainly used for plan21,PLAN23&PLAN41,The function is to cool the process medium for flushing to the appropriate temperature and send it out, so as to ensure that the sealing works within the appropriate temperature range and prolong the service life of the sealing. It can also be used as heat exchanger for other fluids.

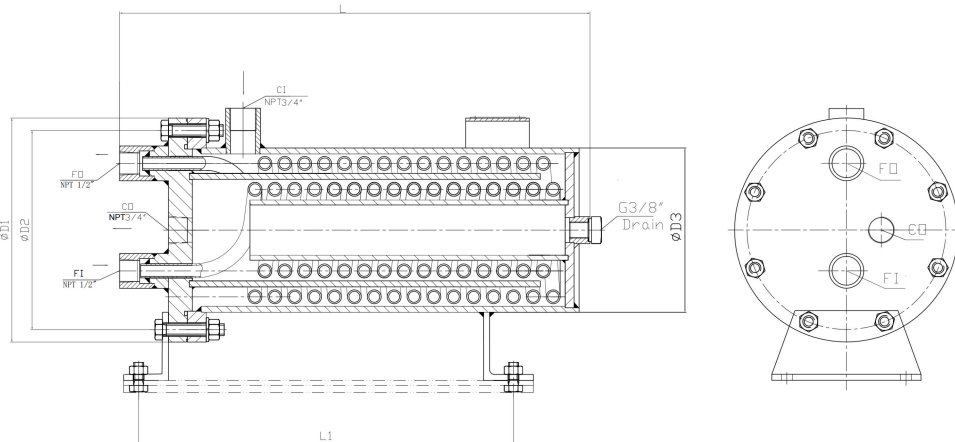
### Operating Limits

- ▼ Temperature: -10°C to 425°C
- ▼ Pressure: Tube 6.3Mpa Shell 0.75Mpa
- ▼ Heat Area: 0.25m<sup>2</sup>, 0.4m<sup>2</sup>, 0.6m<sup>2</sup>, 0.8m<sup>2</sup>, 1.0m<sup>2</sup>, 1.2m<sup>2</sup>

### Application

Petroleum and natural gas, chemical industry, metallurgy, pharmacy, food, mining, nuclear power, water treatment

### AHRL Heat exchanger



### Material Selection Table

Description	Material	
Shell	Carbon steel	●
	CrNi-Steel	○
	CrNiMo-Steel	○
Tube	CrNi-Steel	●
	CrNiMo-Steel	○

1. ● Preferred Material
2. ○ Optional Material
3. Please contact us for special design inquiries.

# AHRL SERIES

Installation Dimensions for AHRL

(mm)

Type	D1	D2	D3	L	L1
AHRL04	225	200	165	472	377
AHRL06	225	200	165	612	527
AHRL08	225	200	165	772	687
AHRL10	225	200	165	952	857
AHRL12	356	312	270	712	585